

Take on college (From Two Who Have)

Presented by
Anna Masciola & Allison Davin

January 2020





Today's Presenters



Anna Masciola (left)

Allison Davin (right)



Allison Davin



- Senior Architecture Major at The Catholic University of America
- Allergic to: milk, eggs, beef, peanuts, lamb, sesame, carrots, strawberries, & tree nuts
- Asthma and seasonal allergies
- I work as a Marketing Intern for Dining Services on campus
- Studied abroad in Rome, Italy for four months last semester
- Has successfully/safely dated in college with allergies
- I have a blog called “Allergy Alli” that I created for my Girl Scout Silver Award in High School
- My little brother also has food allergies



Anna Masicola



- Graduated from the University of Arizona with a BS in Nursing
- Allergic to: eggs, milk, chicken, turkey, peanuts, & tree nuts, and also has asthma and eosinophilic esophagitis
- Works as an RN on a pediatric intensive care unit
- Worked as a camp nurse in Wisconsin with children with food allergies
- Educates schools in Tucson on how to handle food allergies according to the latest evidence
- Lived at home during school
- Directed several spring break service trips with other UA students to cities around the country

Question & Answer





FARE College Resources

■ foodallergy.org/goingtocollege



FARE FOOD ALLERGY COLLEGE SEARCH

Search colleges and universities to find out about their allergy and celiac disease accommodations on campus.

Search by school name

[See all schools](#)

NARROW YOUR CHOICES >

- State >
- Dining Options >
- FARE Program Schools >
- Other Campus Accommodations >
- Type >
- Setting >
- Enrollment Size >

86 School(s) ALL SOME NONE

Babson College
WELLESLEY, MASSACHUSETTS

- Ingredient Info Available Online
- Cross-Contact Procedures in Made-to-Order Areas
- Accommodations for roommate assignments
- Stock, undesignated epinephrine for emergencies

Compare

Belmont University
NASHVILLE, TENNESSEE

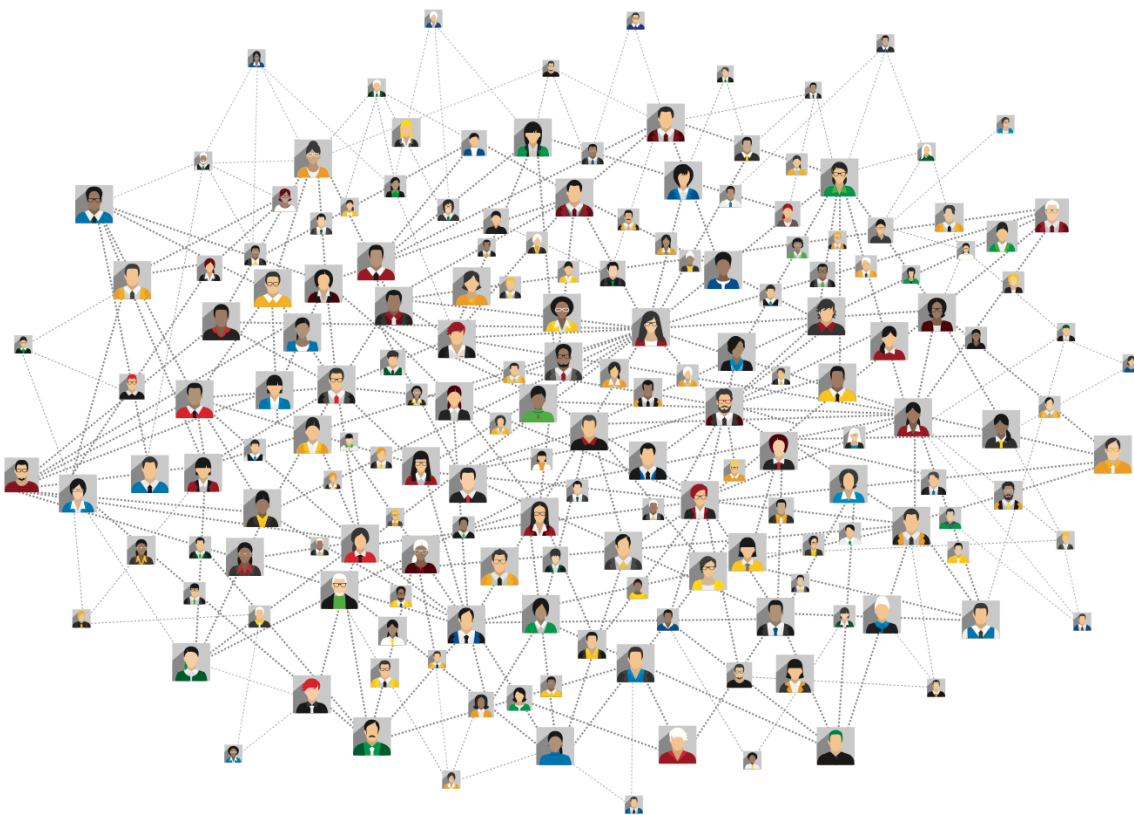
- Ingredient Info Available Online
- Cross-Contact Procedures in Made-to-Order Areas
- Accommodations for roommate assignments
- Stock, undesignated epinephrine for emergencies

Compare

[FARE Food Allergy College Search FAQ](#)

YOUR Food Allergy Story Drives Research Forward

FARE Patient Registry[®]



The FARE Patient Registry connects people living with food allergies to researchers seeking answers.

1



Enroll for free

2



Create your confidential patient profile

3



Take our surveys

FoodAllergyPatientRegistry.org

Thank you!

